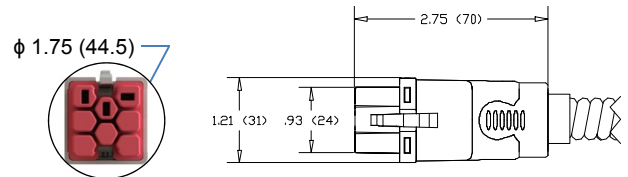
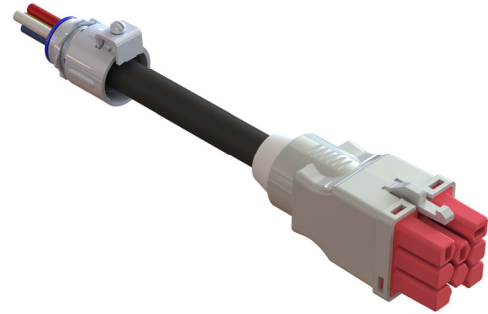


Starter Cord

Provides power supply connection and interface between conventional hardwiring and EZ-wiring components.
 Free end has prepared wires & snap-in connector for field connection to power supply. Load end has a female EZ-Wiring connector.

Features and Benefits:

- **ELECTEC EZ-Wiring**[®] components are UL Listed to be in compliance with UL 183 – Manufactured Wiring Systems (QQVX) and CSA Certified to be in compliance with CSA 22.2 No. 203-1 - Manufactured Wiring Systems.
- Robust terminal design exceeds 470Amp for 4 seconds.
- EZ-Wiring Connectors are integrally moulded (fully encapsulated) utilizing high impact Halogen-free, Eco-Friendly, Low Smoke, UL94-V0 rated, Oxygen Index - 33 %, RoHS-compliant polymers for superior strength, reliability and safety. Dielectric Withstand 3000Vac.
- Mating connectors are self-latching and shrouded for added protection.
- Uniquely-keyed and colour-coded to clearly indicate ratings and provide safe, simple, error-free connectivity. Only connectors having identical colours can plug together properly.
- Approved “Ballast Disconnect Means” per NEC 410.73(g) and CEC Part 1 30-308(4).
- Suitable for use in environmental air handling spaces (plenums) per NEC 300-22(c) and CEC Part 1 12-010(3)
- Acceptable for interrupting current (make or break) under full load.



Ordering Information

Catalogue No.; **1H – VC – LNGO – C III T**

1H	__	__	__	C	__	__	__
----	----	----	----	---	----	----	----

VC System **22** = 125/250V 20A, **2D** = 125/250V 20A + Control,
42 = 277/480V 20A, **4D** = 277/480V 20A + Control,
62 = 347/600V 20A, **6D** = 347/600V 20A + Control

LNGO Application **Power Distribution**

3w	1110 = (L,N,G)
4w	2110 = (2L,N,G)
4w	1120 = (L,N,G,IG)
5w	2210 = (2L,2N,G)
5w	3110 = (3L,N,G)
6w	3120 = (3L,N,G,IG)
6w	2220 = (2L,2N,G,IG)
7w	3310 = (3L,3N,G)
7w	4210 = (4L,2N,G)
8w	3320 = (3L,3N,G)
8w	4220 = (4L,2N,G,IG)

DALI/Class 1 (Control Wiring)

1112 = 1 circuit + control (L,N,G,2C)

3112 = 3 circuit + control (3L,N,G,2C)

III Cord Length in dm. e.g. **040** = 4.0m

I Cord Type **J** = SJOW (300V), **Q** = STOW (600V)

Adhere to all Code requirements and carefully follow installation instructions

