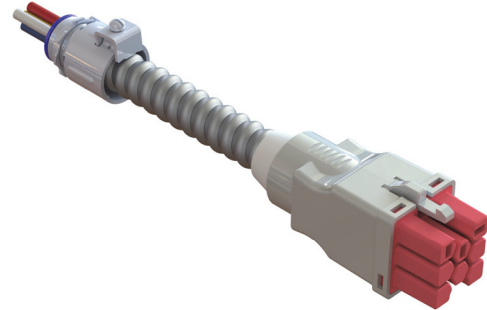


Starter Cable

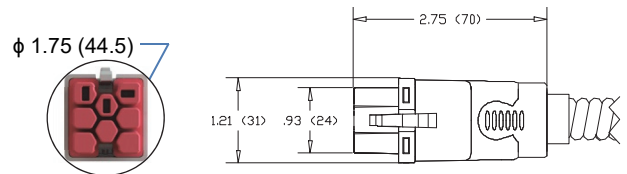
Provides power supply connection and interface between conventional hardwiring and EZ-wiring components.
 Free end has prepared wires & snap-in connector for field connection to power supply. Load end has a female EZ-Wiring connector.

Features and Benefits:

- **ELECTEC EZ-Wiring**[®] components are UL Listed to be in compliance with UL 183 – Manufactured Wiring Systems (QQVX) and CSA Certified to be in compliance with CSA 22.2 No. 203-1 - Manufactured Wiring Systems.
- Constructed using **ULTRALX**[®] MC/AC90* cable (300lbs Tension), minimum 12AWG stranded conductors rated 600V 20A.
- Robust terminal design exceeds 470Amp for 4 seconds.
- Eco-Friendly, Low Smoke, V0 rated, RoHS-compliant materials. Dielectric Withstand 3000Vac.
- Connectors are integrally moulded (fully encapsulated) utilizing high impact Halogen-free polymers for superior strength, reliability and safety.
- Mating connectors are self-latching and shrouded for added protection.
- Uniquely-keyed and colour-coded to clearly indicate ratings and provide safe, simple, error-free connectivity. Only connectors having identical colours can plug together properly.
- Approved “Ballast Disconnect Means” per NEC 410.73(g) and CEC Part 1 30-308(4).
- Suitable for use in environmental air handling spaces (plenums) per NEC 300-22(c) and CEC Part 1 12-010(3)
- Acceptable for interrupting current (make or break) under full load.



Ultra-Compact, multiple applications
 Consult **EZ-Wiring**[®] Configuration Matrix



Ordering Information

Catalogue No.; **1H – VC – LNGO – C III T**



VC System **22** = 125/250V 20A, **2D** = 125/250V 20A + Control,
42 = 277/480V 20A, **4D** = 277/480V 20A + Control,
62 = 347/600V 20A, **6D** = 347/600V 20A + Control

LNGO Application	Power Distribution	Switch	DALI/Class 1 (Control Wiring)
3w	1110 = (L,N,G)	1011 = 1P Switch	
4w	2110 = (2L,N,G)	1111 = Switch w/ Neutral	
4w	1120 = (L,N,G,IG)	1012 = 3, 4-Way Switch	
5w	2210 = (2L,2N,G)	1112 = 3, 4-Way Switch w/ Neutral	1112 = 1 circuit + control (L,N,G,2C)
5w	3110 = (3L,N,G)		
6w	3120 = (3L,N,G,IG)		
6w	2220 = (2L,2N,G,IG)		
7w	3310 = (3L,3N,G)		3112 = 3 circuit + control (3L,N,G,2C)
7w	4210 = (4L,2N,G)		
8w	3320 = (3L,3N,G,IG)		
8w	4220 = (4L,2N,G,IG)		

III Cable Length in dm. e.g. **040** = 4.0m

T Cable Type **A** = #12AC90/MC*, **B** = #12AC90, **N** = Upsized Shared Neutral*, **U** = #10AC90/MC*
H = LSZH #12AC90/MC, **L** = LSZH Upsized Shared Neutral, **M** = LSZH #10AC90/MC

Adhere to all Code requirements and carefully follow installation instructions

