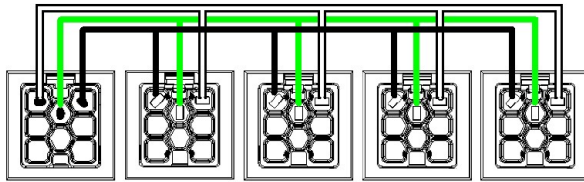
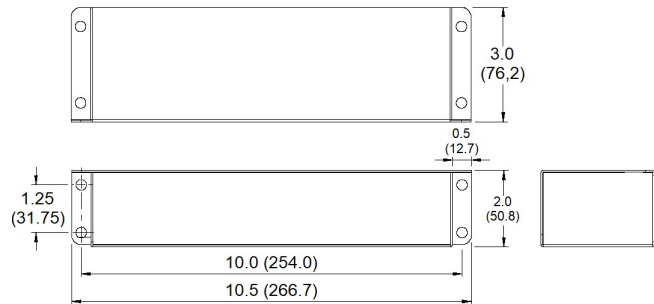
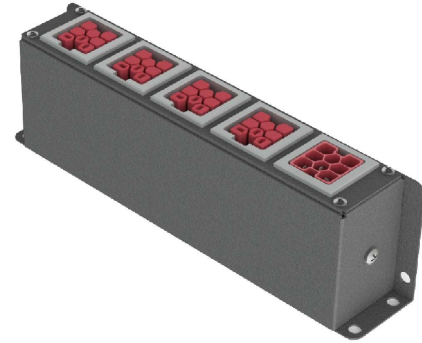


Multi-Tap/Switch Tap

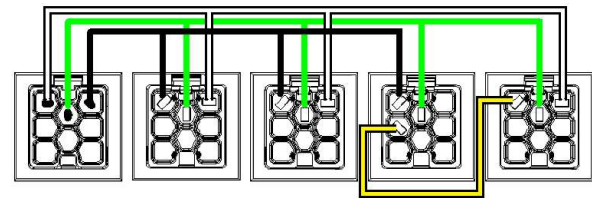
Provides **quick, simple, safe, cost-effective** power or switch tap solution.
Pre-wired assembly expands single input in to multiple outputs or switched and non-switched outputs.

Features and Benefits:

- **ELECTEC EZ-Wiring®** components are UL Listed to be in compliance with UL 183 – Manufactured Wiring Systems (QQVX) and CSA Certified to be in compliance with CSA 22.2 No. 203-1 - Manufactured Wiring Systems.
- Robust terminal design exceeds 470Amp for 4 seconds.
- **EZ-Wiring®** connectors are integrally moulded (fully encapsulated) utilizing high impact Halogen-free, Eco-Friendly, Low Smoke, UL94-V0 rated, Oxygen Index – 33%, RoHS-compliant polymers for superior strength, reliability and safety.
- Dielectric Withstand 3000Vac.
- Mating connectors are self-latching and shrouded for added protection.
- Uniquely-keyed and colour-coded to clearly indicate ratings and provide safe, simple, error-free connectivity. Only connectors having identical colours can plug together properly.
- Approved “Ballast Disconnect Means” per NEC 410.73(g) and CEC Part 1 30-308(4).
- Suitable for use in environmental air handling spaces (plenums) per NEC 300-22(c) and CEC Part 1 12-010(3)
- Acceptable for interrupting current (make or break) under full load.
- Mounting bracket for versatile installation.
- Compact size.



Multi-Tap
1 IN, 4 OUT (347/600V shown)



Switch Tap
1 IN, 2 OUT, Switch, 1 Switched OUT (347/600V shown)

Ordering Information

Catalogue No.;

1H – **VC** – **LNGO** – M **xyyzz C**



VC System

22 = 125/250V 20A, **2D** = 125/250V 20A + Control,
42 = 277/480V 20A, **4D** = 277/480V 20A + Control,
62 = 347/600V 20A, **6D** = 347/600V 20A + Control,
D2 = 60Vdc 20A, **DD** = 60Vdc 20A + Control

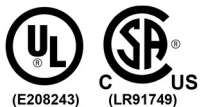
LNGO Application

Power Distribution	Switch	DALI/Class 1 (Control Wiring)
3w 1110 = (L,N,G)/(P,N,G)	1011 = 1P Switch	1112 = 1 circuit + control (L,N,G,2C)/(P,N,G,2C)
4w	1111 = Switch w/ Neutral	
5w	2111 = 3way w/ Neutral	

xyyzz Enclosure dimensions **xx** = Length in inches, **yy** = Width in inches, **zz** = Height in inches

C Colour **G** = Gray, **K** = Black, **N** = Brown, **T** = Tan, **W** = White

Adhere to all Code requirements and carefully follow installation instructions



Consult **EZ-Wiring®** Configuration Matrix
for selection of appropriate connector style to suit application.

