

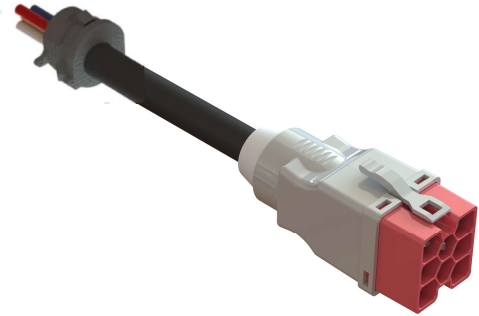
Drop Cord

Provides connection to devices such as receptacles, switches, floor boxes, furniture and light fixtures.

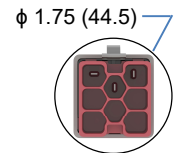
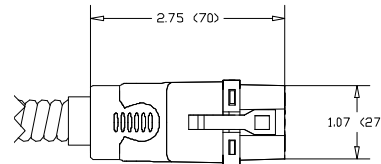
Power supply end has a male EZ-Wiring® connector. Free end has prepared wires & snap-in connector for field connection to load.

Features and Benefits:

- ELECTEC EZ-Wiring® components are UL Listed to be in compliance with UL 183 – Manufactured Wiring Systems (QQVX) and CSA Certified to be in compliance with CSA 22.2 No. 203-1 - Manufactured Wiring Systems.
- Robust terminal design exceeds 470Amp for 4 seconds.
- EZ-Wiring® connectors are integrally moulded (fully encapsulated) utilizing high impact Halogen-free, Eco-Friendly, Low Smoke, UL94-V0 rated, Oxygen Index – 33%, RoHS-compliant polymers for superior strength, reliability and safety.
- Dielectric Withstand 3000Vac.
- Mating connectors are self-latching and shrouded for added protection.
- Uniquely keyed and colour-coded to clearly indicate ratings and provide safe, simple, error-free connectivity. Only connectors having identical colours can plug together properly.
- Approved “Ballast Disconnect Means” per NEC 410.73(g) and CEC Part 1 30-308(4).
- Acceptable for interrupting current (make or break) under full load.



Ultra-Compact, multiple applications
Consult EZ-Wiring® Configuration Matrix



Ordering Information

Catalogue No.;

1H – VC – LNGO – D III W XYZ

1H	__	__	D	__	__	__
----	----	----	---	----	----	----

VC System

22 = 125/250V 20A, 2D = 125/250V 20A + Control,
42 = 277/480V 20A, 4D = 277/480V 20A + Control,
62 = 347/600V 20A, 6D = 347/600V 20A + Control

LNGO Application

Power Distribution

DALI/Class 1 (Control Wiring)

3w 1110 = (L,N,G)

3w 2010 = (2L,G)

4w 2110 = (2L,N,G)

5w 3110 = (3L,N,G)

1112 = 1 circuit + control (L,N,G,2C)

III Cord Length (in cm)

030 = 12in(30cm), 046 = 18in(46cm), 061 = 24in(61cm), 076 = 30in(76cm), 091 = 36in(91cm),
122 = 4ft(1.2m), 183 = 6ft(1.8m), 244 = 8ft(2.4m), 305 = 10ft(3.1m), 366 = 12ft(3.7m)

W Gauge

2 = #12AWG (20A), 4 = #14AWG (15A), 6 = #16AWG (10A), 8 = #18AWG (7A)

XYZ (X) Cord Type
(Y) Cord Colour
(Z) Other Options

J = SJ (300V), S = S (600V)

K = Black, W = White

C = Cord connector, A = Quick-connector style “A”, M = Quick-connector style “M”,

W = Wire connector, blank = none

Adhere to all Code requirements and carefully follow installation instructions



(E208243)

EZ-Wiring H-Series Drop Cord Information Sheet

04/22

Information is subject to change without notice.



ELECTEC Building Wiring Systems
90 Decosta Street, Arnprior, ON K7S 0B5
Phone: 613-622-0840 Fax: 613-622-0334

www.electeconline.com