

EZ-Cabling Installation Guide

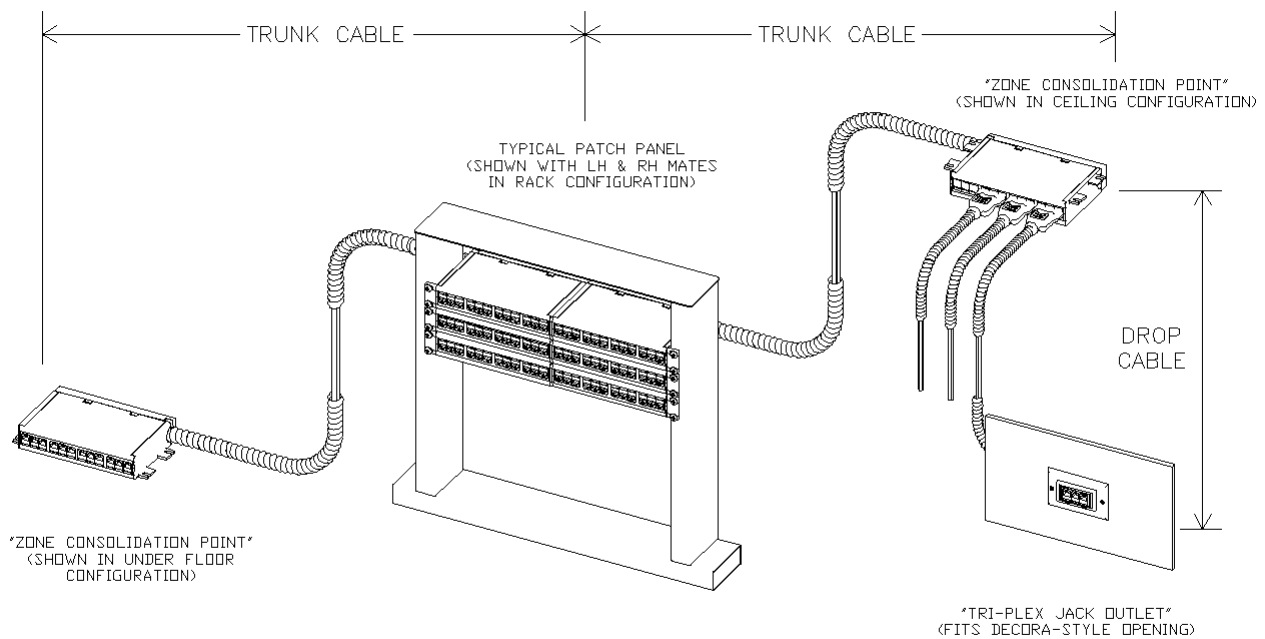
Preamble

EZ-Cabling® is a pre-terminated turnkey voice/data cabling system that enables a fast, reliable and straightforward installation of network cabling. The system comprises of two main parts, trunk cables and drop cables, the layout of which are typically predetermined during the planning and engineering phase of construction.

It is recommended that specifiers and installers read this guide carefully and ensure that all directions are fully and clearly understood.

Recommended telecommunications installation practices and relevant building codes must always be respected when installing EZ-Cabling.

System Overview



Installing Trunk Cables

Trunk cables run the length from your communications room panel to a consolidation point location. They come preconfigured with a consolidation point housing at one end and a patch panel housing at the other end. The patch panel housings come preconfigured in either left or right-handed versions designed to mate to form your patch panel in an organized manner. Housings can be easily re-configured on site to accommodate unforeseen changes and/or site conditions by following the directions in this guide.

Trunk cables are typically packaged on a reusable “EZ-Reel” to facilitate installation by pulling cables from consolidation point locations back to the panel room. If circumstances do not allow for this, the modular housings at each end of the cable are reconfigurable to be installed in either location to accommodate cable pulling in your desired direction. See “Reconfiguring Trunk Cables” below for details.

At The Panel

- ⇒ Using the “Zone Planning Guide”, arrange your patch panel using mated left and right-hand panel housings of trunk cables.
- ⇒ Left and right-hand panel housings each come equipped with a joiner spline. Only one spline is required for each pair, therefore remove a spline from one of the panel ends to join the pair.

1. Using a slotted screwdriver, remove the back panels from the housing pair to be mated.



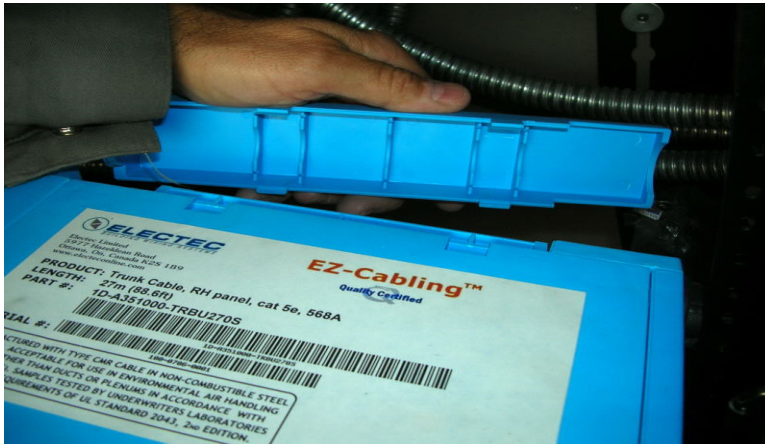
2. Slide the joiner spline off of one of the panel housings from front to back.



3. Join the panel housings using the spline still attached to one of the housings.



4. Once joined, ensure that both back panels are re-clipped and secure.



⇒ Fasten each mated, standard 1U panel unit into the rack as per your rack guidelines.



At The Consolidation Point (ceiling and/or floor)

⇒ Secure the consolidation point end to the ceiling or floor using appropriate methods.

Reconfiguring Trunk Cables

Changing LH/RH orientation of panel housings

⇒ It is recommended by the manufacturer that EZ-Cabling trunk cables be installed in the form in which they are delivered. If it is necessary to change the side in which the cable enters, please use the following guidelines.

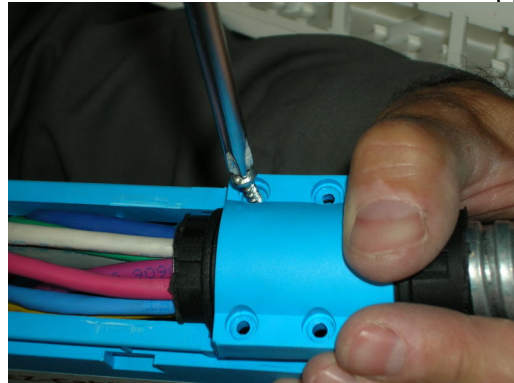
1. Using a slotted screwdriver, remove the back panel.
2. Using a Philips screwdriver, remove the cable support



3. Carefully transfer the cable to the other side. It may be easier to relocate the cable by gently turning the box one half rotation while bringing the cable over. It is important that ANSI/EIA/TIA cabling standards are respected when manipulating and bending cables.



4. Insert the moulded strain relief into its slotted holder and re-fasten the cable support.



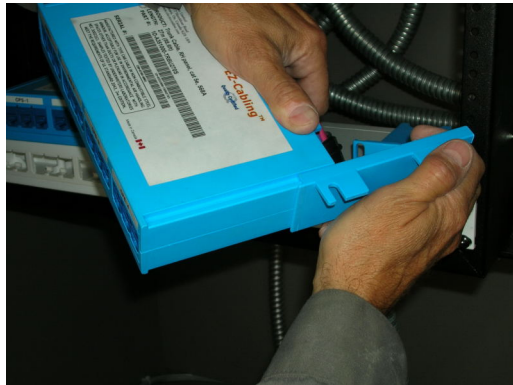
5. Ensure that all cables are carefully positioned inside the housing. Re-clip the back panel.



Changing floor/ceiling orientation of zone consolidation point ends

⇒ It is recommended by the manufacturer that EZ-Cabling trunk cables be installed in the form in which they are delivered. If it is necessary to change the orientation of the mounting sliders, please use the following guidelines.

1. Using a slotted screwdriver, remove the back panel from each panel end.
2. Using a Philips screwdriver, remove the cable support.
3. Slide each mounting slider off from front to back



4. Reposition each mounting slider to the opposite side so that the housing can now be mounted in the opposite orientation keeping the pins up on the RJ-type jacks.
5. Ensure that all cables are carefully positioned inside the housing, refasten the cable support and re-clip the back panel.

Installing Drop Cables

Drop cables enable a single-click relocation of an entire workstation by providing a turnkey connection to strategically placed consolidation points. Drop cables include a workstation tri-plex jack housing that can be installed in hard walls, standard *Decora* device plates and modular furniture. The workstation housing is adjustable for a range of wall depths allowing Drop cables to be compatible with the majority of modular furniture systems.

When installing drop cables in a modular workstation environment, it is recommended that cables be pushed or pulled up pack-poles by the triplex plug end. The workstation tri-plex jack housing is best left outside of any poles or raceways during cable installation.

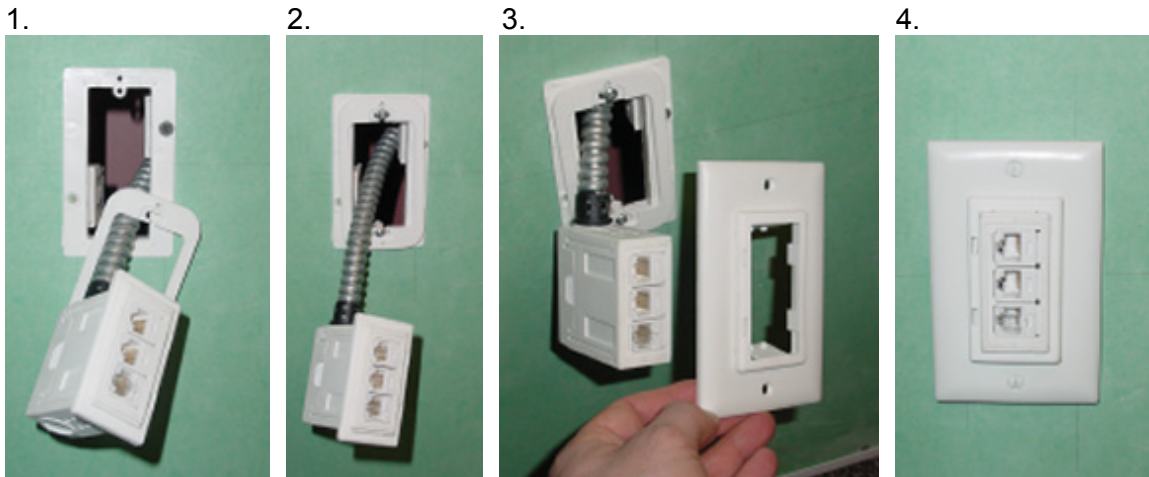
At The Consolidation Point (ceiling and/or floor)

⇒ Insert the tri-plex plug end of the drop cable into the appropriate group of jacks at the consolidation point, making sure all cables are properly supported to ensure maximum connectivity and safety.



At The Workstation (hard wall)

⇒ Using the supplied wall mounting kit, install the workstation jack end of the drop cable into the wall.



At The Workstation (modular furniture)

⇒ Using the supplied mounting kit, install the workstation jack end of the drop cable into a standard *Decora* opening.

1.



2.



3.



⇒ To accommodate a range of depths of walls, use the tabs on the sides of the adjustor ring to set the depth of the workstation jack housing before securing into place.



Design Assistance and Technical Support for **EZ-Cabling** and all other Electec products

Email: support@electeconline.com
Telephone: (613) 836-0300 or (866) 233-5328

www.electeconline.com